

# Shadow Tracker™



**Do you know where your employees are?  
Do you know what they did today?**

## **Unique vehicle tracking system drives operating costs down - and production up.**

Did they arrive at the customer site on time? What time did your employees really go home? How fast was your employee driving through the neighborhood? As a manager or owner, keeping a watchful eye on your vehicles - and employees - helps ensure a job well done, and at a profit.

In today's economy controlling fuel, payroll, and fleet maintenance cost is critical to the success of your company. Reducing these costs is a great way to increase profitability and to stay competitive. Abbott's GPS vehicle tracking system can manage your fleet and help you get the information your business needs to reduce these costs.



The Shadow Tracker™ j2 allows you to monitor your vehicle's every movement. Now you will know how fast your fleet vehicle is going and where they have been. With the Shadow Tracker™ j2, accountability is just a click away.



### **Advanced technology, advanced tracking capabilities**

Shadow Tracker™ j2 utilizes proprietary technology and the Global Positioning System (GPS) developed by the United States Department of Defense to help you :

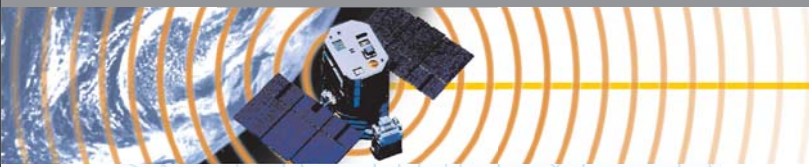
- Document actual routes driven
- Monitor speeds
- Reduce fuel use
- Stop unauthorized use of vehicles
- Eliminate "moonlighting"
- Validate time sheets
- Reduce overtime
- Reduce liability and increase profitability

### **The Shadow Tracker™ j2 Advantage**

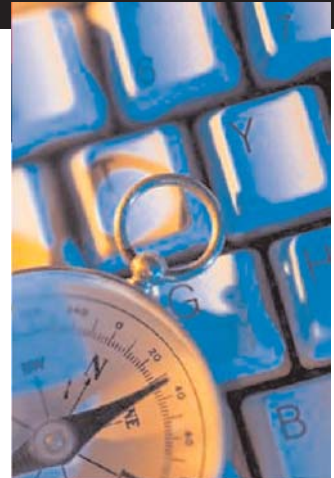
The Shadow Tracker™ j2 system is a cost effective way to reduce overhead and to increase efficiency - and your bottom line.

- Installs easily in any vehicle
- Costs hundreds less than other GPS systems
- Highly detailed mapping features
- Detailed productivity reports
- Free technical support
- 1 year limited warranty
- **No monthly fees - a one-time low cost investment!**





# Shadow Tracker™



Length .....	3 in
Width .....	0.5 in
Height .....	2 in
Weight	
Shadow Tracker™ .....	1.41 oz.
GPS antenna with magnetic mount .....	2.6 oz.
Memory .....	512k **
Data collection Rate .....	Adj. 3 to 120 sec.
Approximate Data Storage Time .....	360 hrs. (Travel Time)*
Operating temperature range .....	-25C to 70C

**Minimum System Requirements:**

- Windows® XP Pro, XP Home, 2000 Professional, 2000 Server, 2003 Server
- Pentium® 1 Ghz (or higher recommended)
- 256 MB min. (512 MB recommended)
- 1.5 GB of free HD space
- CD Rom
- SVGA Monitor
- Internet Explorer 6
- Open USB port
- Shadow Tracker™ software



901 West Fourth Ave.  
Pine Bluff, AR 71601

**Tel: (800) 643-5973**  
**(870) 535-4973**  
**Fax: (870) 535-4970**

**www.atrol.com**  
**sales@atrol.com**

© 2005 ATTI, Inc., all rights reserved

\* Estimated actual travel time. \*\*Stresses above those listed under Absolute Maximum ratings may cause permanent damage to the device. This is a stress rating only; the functional operation of the device at these or any other conditions above those indicated maximum rated conditions for extended periods may affect device reliability. Shadow Tracker™, MobilEyes™ and Time Traveler™ are registered trademarks of Advanced Tracking Technologies, Inc. Windows® and Pentium® are trademarks of Microsoft® and Intel® respectively.



# Shadow Tracker™

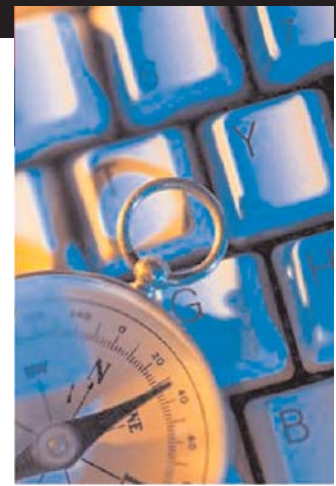
## j2 - Power Up

**Do you know where your employees are?  
Do you know what they did today?**

### Power at your fingertips...Immediately.

The j2 power up battery pack provides the most dynamic and diverse out of the box tracking package on the market. With limited setup time, and virtually no installation necessary, the Shadow Tracker™ Power Up gets you up and running in minutes. This simple setup lets you to quickly intervene and identify problem employees and take immediate action before the situation escalates.

- No vehicle wiring needed
- Easily swap units across multiple vehicles
- Excellent tool for quick spot checking
- Fully compatible with the Shadow Tracker™ j2



### j2 - Power Up

Length .....	3 in
Width .....	0.5 in
Height .....	2 in
Weight .....	1.41 oz.



901 West Fourth Ave.  
Pine Bluff, AR 71601

Tel: (800) 643-5973  
(870) 535-4973  
Fax: (870) 535-4970

[www.atrol.com](http://www.atrol.com)  
[sales@atrol.com](mailto:sales@atrol.com)

# Shadow Tracker™

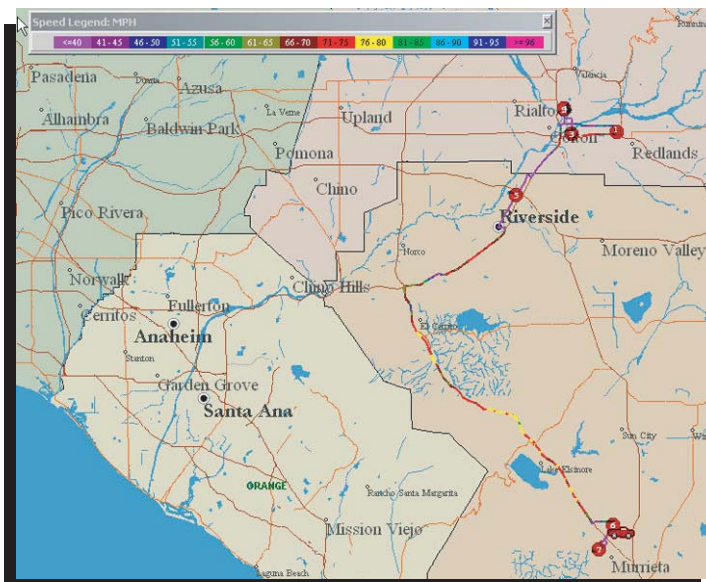
## j2 - Answering Your Questions!

### Where did my employees go today?

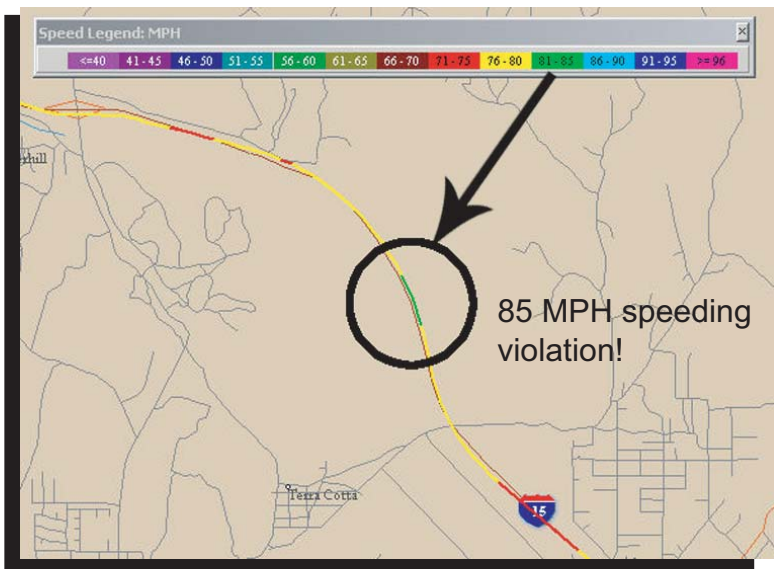
The picture to the right is an example of the travel map produced by the Shadow Tracker™ mapping software.

The travel route is clearly marked along with stop locations.

- Manage and monitor a number of vehicles in a limited amount of time
- Big picture overview with the ability to drill down to problem areas



### How fast are my employees really driving?



The route line is color coded to indicate the speed the vehicle was traveling. The color on the route line corresponds to the Speed Legend toolbar.

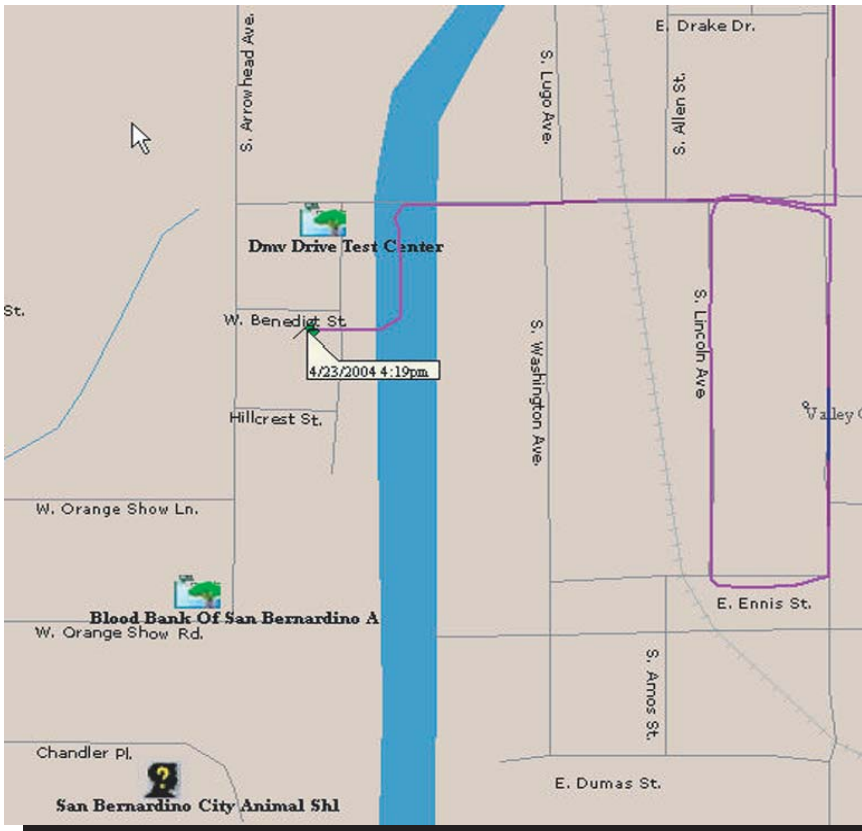
Excessive speeds are represented by a more dynamic color scheme, allowing you to quickly identify risky driving behavior.

- Stave off public complaints
- Reduce insurance rates
- Reduce company liability

# Shadow Tracker™

## j2 - Answering Your Questions!

What time did my employees leave and return to the office?

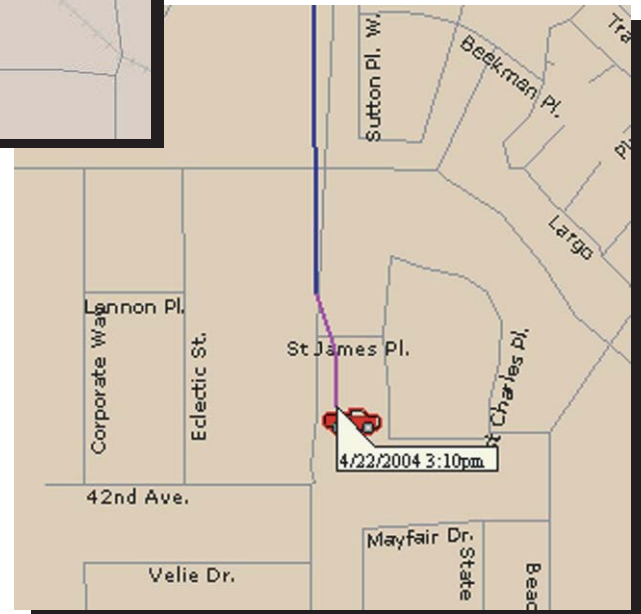


The green flag indicates the beginning location marker for each day's travel. Zooming and clicking on the beginning location marker displays the time and date of this activity.

- Quickly determine lost "morning drag" hours
- Monitor daily fleet mobilization.

The vehicle shown to the right represents the ending location marker for each day's travel and activity. Zooming in and clicking on the ending location marker displays the time the day actually ended.

- Eliminate time sheet "padding"
- Easily determine end of day work times



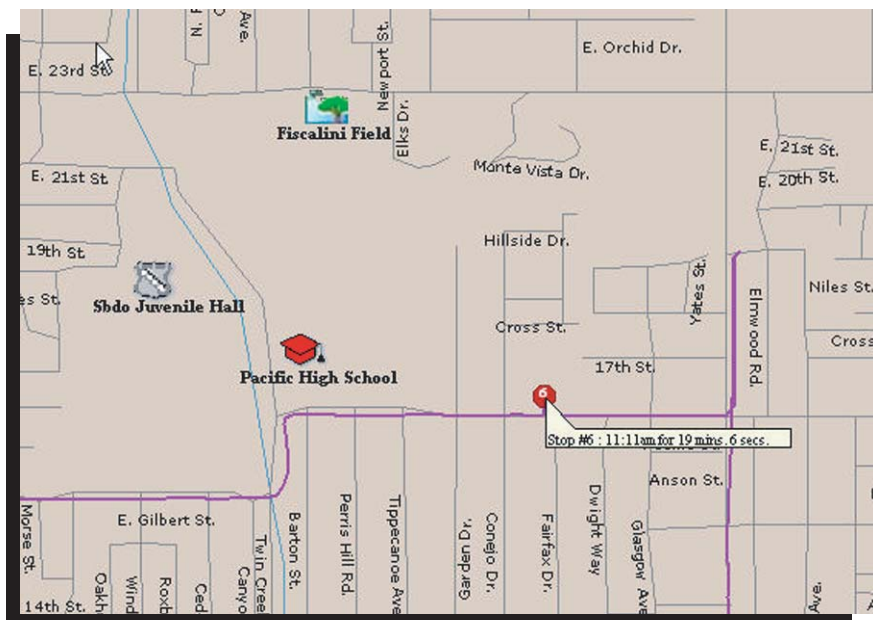
# Shadow Tracker™

## j2 - Answering Your Questions!

### Are they stopping at non work related locations?

Each stop is labeled with a sequential number indicating the order of the stops. Zooming in and clicking on the stop marker displays the time, date and duration of the stop. Street names are printed on the map, and address information is available by placing the cursor on the road.

- Eliminate personal side-trips
- Eliminate time sheet fraud
- Reduce fuel cost
- Eliminate excess vehicle wear



### Did we bill this customer the appropriate number of labor hours?

12:03PM	12:41PM	00:38	In-Transit	60	26.23
<b>12:41PM</b>	<b>02:19PM</b>	<b>01:38</b>	<b>L-Benner Metals 200 Main Street</b>		
02:19PM	02:31PM	00:12	In-Transit	48	5.12

This report fragment (see next page for complete report) demonstrates the ease in which customer locations can be identified and billable hours identified. This demonstrates a 1 hour and 38 minute stop at a pinpointed customer location named Benner Metals on 200 Main Street.

- Eliminate customer complaints
- Verify employee work logs
- Match actual work time to planned work time

# Shadow Tracker™

## j2 - Answering Your Questions!

### What reports are available?

The Shadow Tracker™ Lite software provides a detailed report of your driver's activities. The GPS Daily Tracking Report shown below outlines the activities of a driver in a log fashion. Beginning and ending times for each activity, stop durations, max speed and miles traveled for each route are displayed on the report.

Copyright © 1998 - 2005 Advanced Tracking Technology, Inc. All Rights Reserved. Patent Pending Page: 1

### Daily Tracking Report

Report Date: 12/7/2005  
 Report Time: 5:30:17PM  
 Time Interval: 16 Minute(s)  
 Speed Setting: 65 Mph  
 Start Time: 12:00AM  
 Stop Time: 11:59PM

Driver : Darrell  
 Tracking Date : Monday, March 03, 2003  
 Unit : Salt Truck

Start Time	End Time	Duration hh:mm:ss	Action Type	Location Name	Max Speed	Mileage
09:36AM	09:36AM		Begin	Begin: 2060 - 2145 Corporate Square Blvd., JACKSONVILLE FL, 32216		
09:36AM	11:02AM	01:25:59	In Transit	In-Transit	68	34.73
11:02AM	11:22AM	00:20:00	Stop 1	4950 - 5182 Nathan Hale Rd., JACKSONVILLE FL, 32234		
11:22AM	11:30AM	00:08:00	In Transit	In-Transit	61	5.99
11:30AM	11:46AM	00:16:00	Stop 2	3800 - 3967 Rancho Rd. E., JACKSONVILLE FL, 32221		
11:46AM	12:26PM	00:40:00	In Transit	In-Transit	48	7.78
12:26PM	12:50PM	00:24:00	Stop 3	8400 - 8699 Noroad, JACKSONVILLE FL, 32210		
12:50PM	12:58PM	00:08:00	In Transit	In-Transit	25	1.17
12:58PM	01:14PM	00:16:00	Stop 4	5300 - 5399 Old Middleburg Rd., JACKSONVILLE FL, 32210		
01:14PM	01:24PM	00:10:00	In Transit	In-Transit	48	7.50
01:24PM	01:42PM	00:18:00	Stop 5	450 - 499 Chaffee Rd. S., JACKSONVILLE FL, 32221		
01:42PM	02:40PM	00:57:59	In Transit	In-Transit	68	35.68
02:40PM	02:40PM		End	End: 1800 - 2059 Corporate Square Blvd., JACKSONVILLE FL, 32216		

Prepared by Shadow Tracker Lite v3

Stops	In Transit	Mileage	Speed
Number of Stops	5	Number of Transits	6
Avg Stop Time	00:19	Miles Driven	92.85
% Stop Time	31	Avg Miles per Transit	15.48
Total Stop Time	01:34:00	Max.Speed Driven	68
		Avg.Speed Driven	42
		%	
		Time Over Speed	6.67
		Total Accrued Time	05:03:58
		Time Over Speed	00:14:00

The day's accrual statistics are listed following the end of each Daily Tracking Report. This driver synopsis helps Managers quickly compare employee field activity to company defined:

- Payroll
- Speed limit thresholds
- Standard job times
- Route efficiency