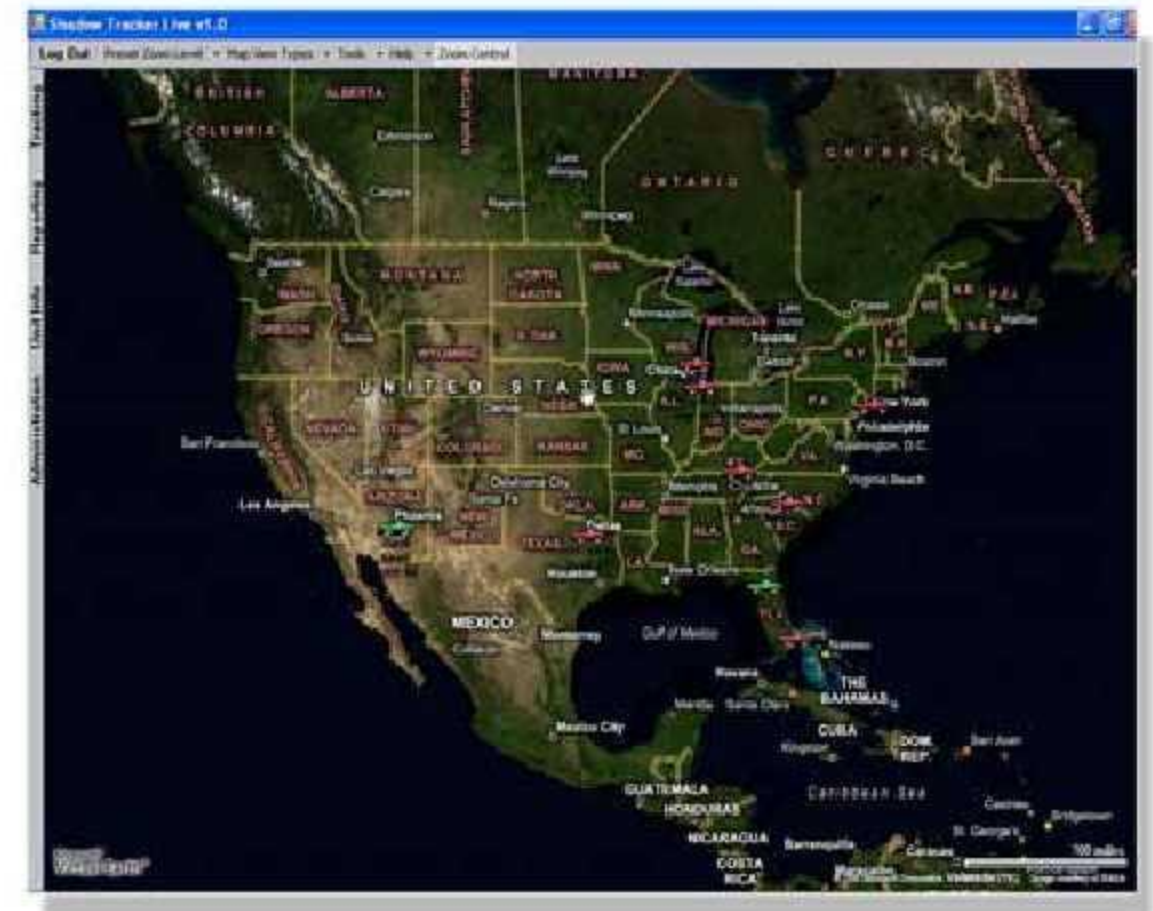




Shadow Tracker® Live

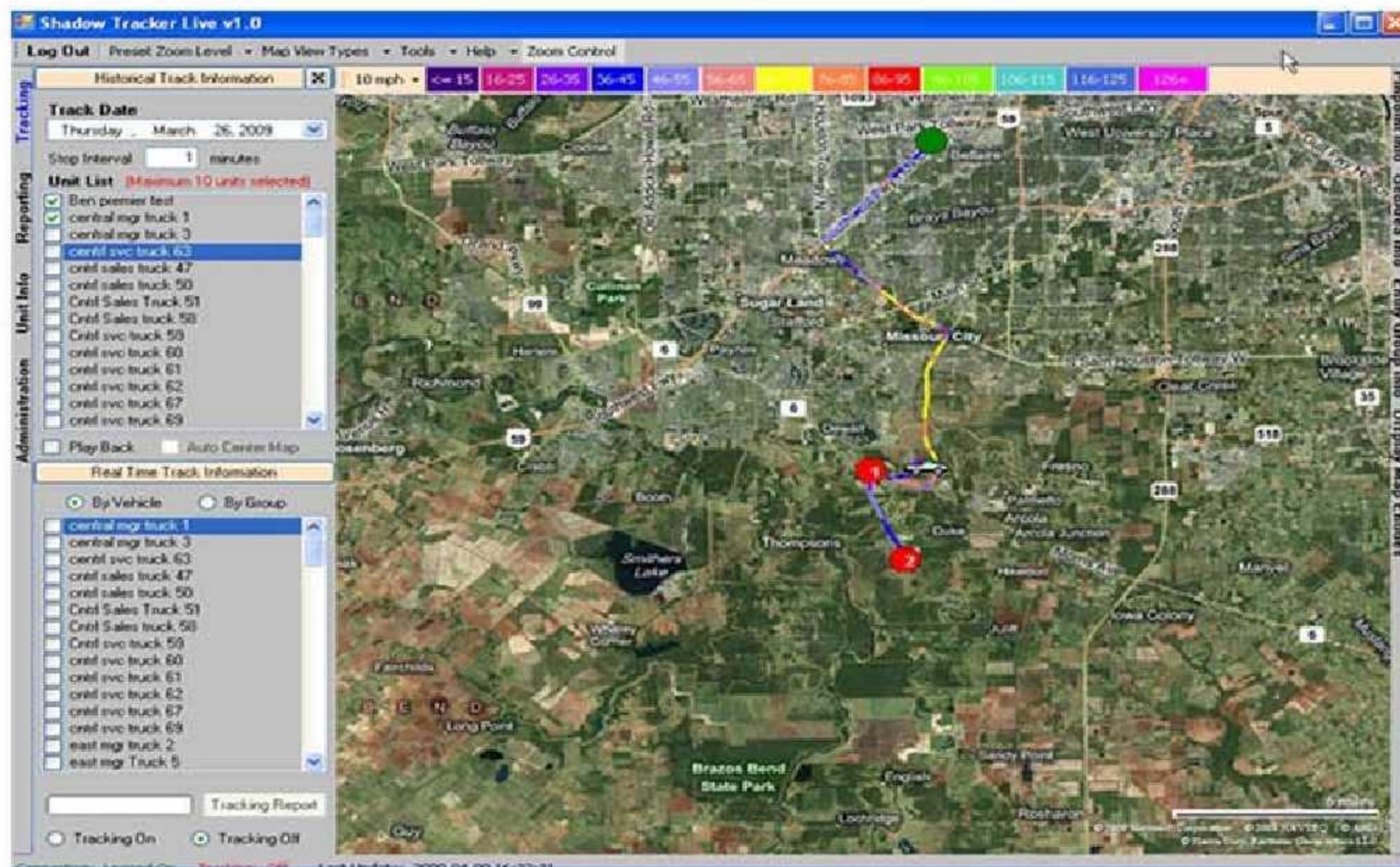
What is Shadow Tracker® Live?

Shadow Tracker® Live is the newest software release from Advanced Tracking Technologies, Inc.® Designed around the needs of fleet managers, supervisors and business owners, this software is a powerful tool in creating an efficient, cost-effective fleet management system. Using input from thousands of customers, ATTI® has crafted a user-friendly and comprehensive interface to minimize the time it takes to familiarize yourself with new software and maximize your return on investment. Shadow Tracker® Live has been built to work for any size fleet from single users to large corporate applications.



What does Shadow Tracker® Live Offer Me?

Companies can designate Branch locations, as well as sub groups within the fleet to quickly identify: Managers, Service Techs, or anything your fleet needs. Maps and Reporting can quickly be built around these sub categories to help you filter down to only the facts you need. Managers can review up to 10 different historical routes at the same time, so you can see exactly where your fleet travels.



Utilizing a patented and customizable color variable line to designate speed, we can show you precisely where the vehicle traveled and the exact speed it drove.



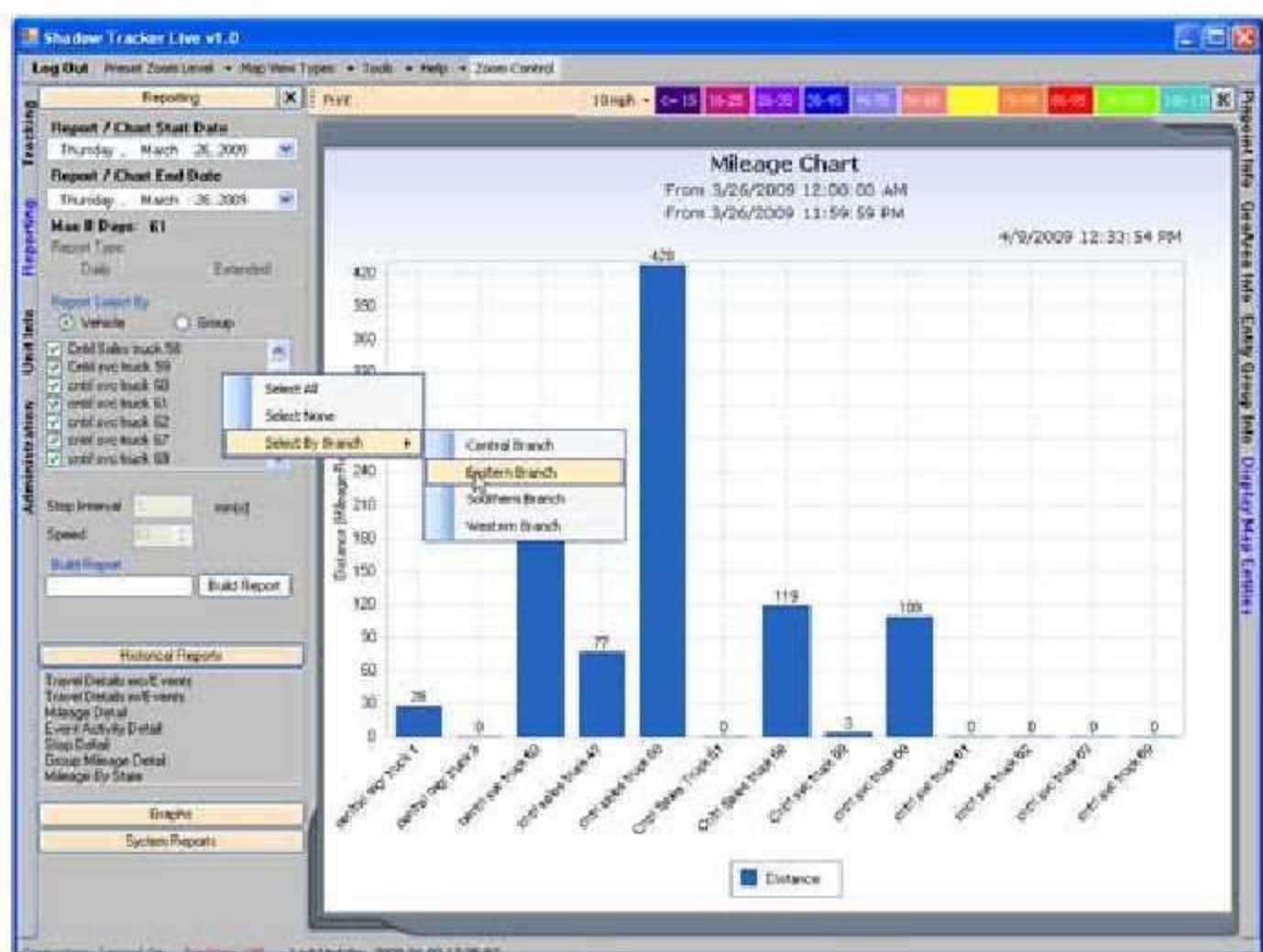
Powerful Graphs and Reports offer practical and usable analysis.



The Shadow Tracker® Live software gives you the ability to create Graphs and Reports that provide a detailed summary of your vehicle's daily travel. GPS data is gathered and compiled according to the reporting parameters you select and then organized and displayed in an easy to understand format.

Start Time	End Time	Duration	Action Type	Location Name	Max Speed	Mileage (mi)
3/26/2009 8:42:19 AM			Begin	4754 Southwest Fwy, Houston, Texas 77024		
3/26/2009 8:42:15 AM	8:52:00 AM	00:09:45	Transit	In Transit	75.8	17.48
3/26/2009 9:02:10 AM	9:02:10 AM	00:00:00	Stop 1	Highway 50, Houston, Co., Texas 77439		
3/26/2009 9:02:10 AM	9:02:10 AM	00:00:00	Transit	In Transit	54.8	0.71
3/26/2009 9:10:10 AM	9:10:10 AM	00:00:00	Stop 2	Bayou Point Way, Houston Co., Texas 77439		
3/26/2009 9:10:10 AM	9:21:01 AM	00:10:51	Transit	In Transit	60.8	6.60
3/26/2009 9:27:01 AM			End	2812 Southside Pkwy Dr, Houston Co., TX 77439-6782		

Stop		In Transit		Distance		Speed	
Number of Stop	2	Number of Transit	2	Distance Traveled	21.81	Max Speed	75.8
Avg Stop Time	00:00:00	Avg Transit Time	00:10:51	Avg Speed	8.54	Avg Speed Driver	48.0
% Stop Time	11.82%	% Transit Time	88.18%	% Over Speed		% Over Speed	23.81
Total Stop Time	00:00:00	Total Transit Time	00:21:48	Total Accrued Time	00:21:48	Time Over Speed	00:00:00

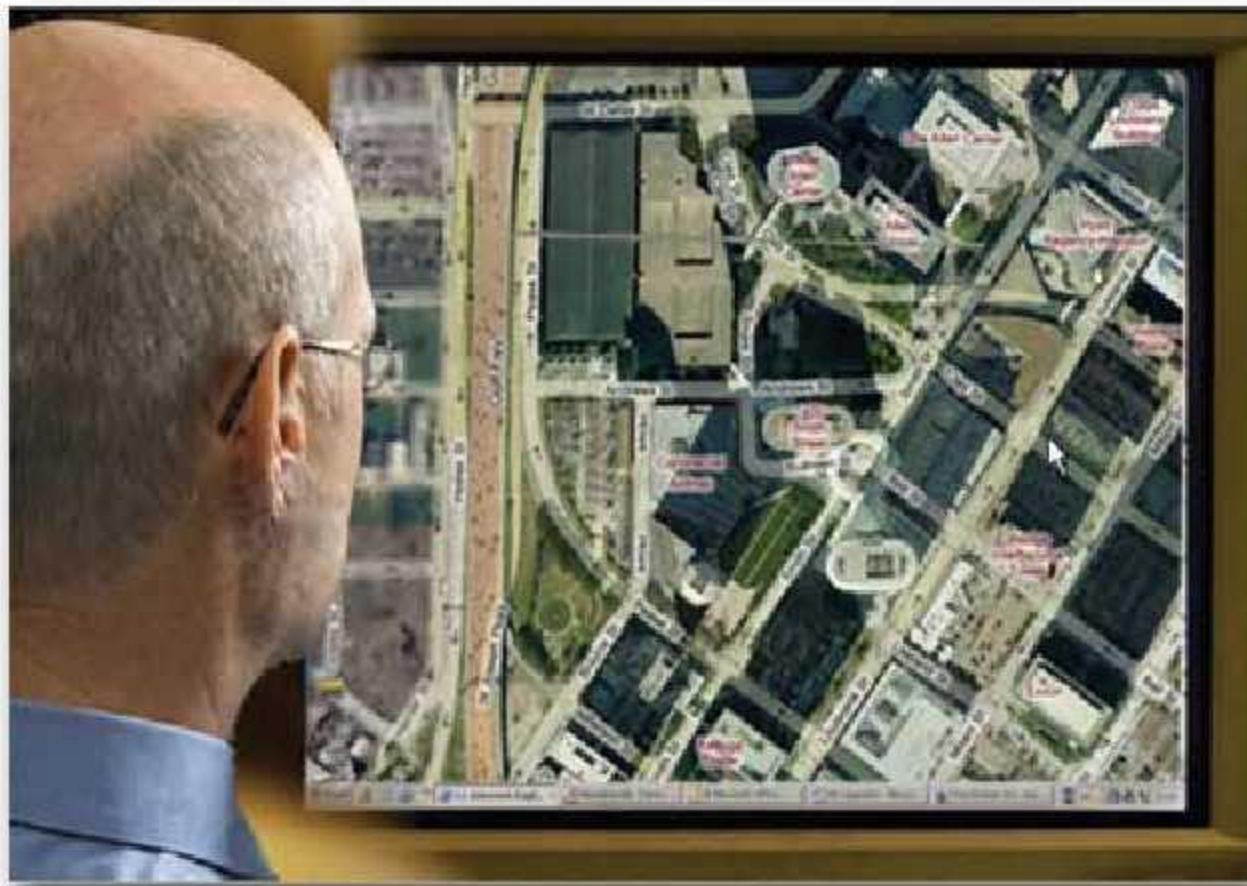


Graphs and Reports are created by user defined metrics. Filters allow users to run by individual, group, or branch offices. Easily get to only the information you want to know.



Continuous Mapping Updates.

Shadow Tracker® Live utilizes Microsoft Virtual Earth® mapping technology to give you the most up-to-date maps every time you login. Maps and satellite imagery view can be set to customized views depending on your needs.



Shadow Tracker® Live take a unique approach using a hybrid software / online interface. This allows ATTI® to remotely host a client's database. It also means every time you login you get the next evolution of the Shadow Tracker® Live software. When we add new capabilities you see them immediately.

Software Information

Complete Route Overlay	Yes
Satellite Imagery	Yes
Pinpoint Customer Locations	Yes
Geobound Areas	Yes
Customized Login	Yes
Fleet Size	Unlimited
User Defined GPS Tracking Reports	Yes
User Defined Graphs and Charts	Yes

Computer Requirements

Operating System Windows® XP and Vista
 CPU 2.8 GHz
 RAM 512 MB min (1GB recommended)
 Available Disk Space 150 MB
 USB (Historical Tracking Units Only)
 SVGA Monitor
 Screen Resolution:800X600 Min
 (1024 X768 Recommended)
 Mouse with Wheel